

OPTIONAL FEATURES

MODEL	CP Caster Plate	IEP Floor Isolation Enhancement Floor	VSS Ventilation Silencing System	SDS Soundwave Deflection System	EFS Exterior Fan Silencer	HXS 10" Height Extension for Standard	HXE 10" Height Extension for Enhanced	Studio Light
127 LP	\$ 535	\$ 130	\$ 465	n/a	\$ 85	\$ 495	\$ 895	\$ 150
4230	\$ 300	\$ 80	\$ 465	\$ 720	\$ 85	\$ 305	\$ 555	\$ 150
4242	\$ 395	\$ 95	\$ 465	\$ 790	\$ 85	\$ 325	\$ 600	\$ 150
4260	\$ 490	\$ 115	\$ 465	\$ 875	\$ 85	\$ 450	\$ 830	\$ 160
4284	\$ 555	\$ 145	\$ 930	\$ 1,085	\$ 170	\$ 490	\$ 905	\$ 210
4848	\$ 490	\$ 105	\$ 465	\$ 810	\$ 85	\$ 370	\$ 670	\$ 150
4872	\$ 560	\$ 135	\$ 465	\$ 970	\$ 85	\$ 515	\$ 925	\$ 180
6060	\$ 765	\$ 190	\$ 930	\$ 965	\$ 170	\$ 580	\$ 1,070	\$ 160
6084	\$ 925	\$ 220	\$ 930	\$ 1,170	\$ 170	\$ 620	\$ 1,145	\$ 320
7272	\$ 945	\$ 230	\$ 930	\$ 1,125	\$ 170	\$ 660	\$ 1,190	\$ 180
7296	\$ 1,090	\$ 265	\$ 930	\$ 1,330	\$ 170	\$ 700	\$ 1,265	\$ 360
8484	\$ 1,110	\$ 280	\$ 1,395	\$ 1,375	\$ 255	\$ 655	\$ 1,220	\$ 420
84102	\$ 1,500	\$ 385	\$ 1,395	\$ 1,520	\$ 255	\$ 790	\$ 1,465	\$ 420
84126	\$ 1,665	\$ 420	\$ 1,860	\$ 1,715	\$ 340	\$ 825	\$ 1,535	\$ 630
10284	\$ 1,245	\$ 330	\$ 1,395	\$ 1,520	\$ 255	\$ 785	\$ 1,455	\$ 500
102102	\$ 1,690	\$ 445	\$ 1,395	\$ 1,660	\$ 255	\$ 915	\$ 1,695	\$ 500
102126	\$ 1,865	\$ 495	\$ 1,860	\$ 1,865	\$ 340	\$ 950	\$ 1,765	\$ 750
102144	\$ 2,310	\$ 610	\$ 1,860	\$ 2,005	\$ 340	\$ 1,085	\$ 2,015	\$ 750
102168	\$ 2,485	\$ 660	\$ 2,325	\$ 2,210	\$ 425	\$ 1,120	\$ 2,085	\$ 1,000
102186	\$ 2,930	\$ 775	\$ 2,325	\$ 2,355	\$ 425	\$ 1,250	\$ 2,325	\$ 1,000

SL - Studio Light Package



As with all WhisperRoom features, the optional Studio Light series provides maximum flexibility. Dual light systems, LED puck lights for general lighting and multicolored LED lights for mood / ambiance, are both incorporated into this unique design. Both create, literally, no noise or heat and can easily be adjusted for desired brightness. In addition, the multicolored lights can be set to a single color or alternating colors, as well as, a variety of other functions using a remote switch, which is included. The Studio Light, in conjunction with the numerous interior acoustical foam colors now available, provide limitless possibilities! The size and quantity of Studio Lights, included in each package, is determined by the size of the WhisperRoom.

See model-specific package prices above.

WA – Wide-Access Door



Standard
\$ 410

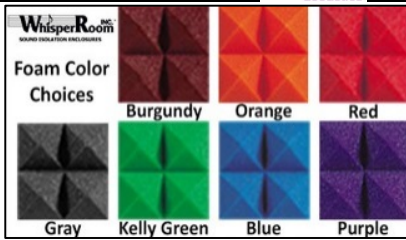
Enhanced
\$ 755

RAMP SYS
\$ 265

Any WhisperRoom with a 5’ wall or larger can be configured with a Wide-Access Door upgrade. This upgrade is perfect for applications which require the passage of large items into and out of the WhisperRoom. Also, a ramp system is available for wheelchair access. Wide-Access doors include a 16” x 48” window.

NOTE: Must be specified at initial order.

Acoustical Foam



FOAM 2
\$ 75

FOAM 3
\$ 115

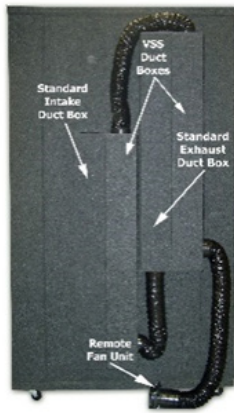
FOAM 4
\$ 150

Purchase additional boxes of foam. Each sheet is 2’ x 4’ and 2” thick and each box contains the indicated number of sheets.

For those applications where more acoustical foam is needed. Use as much or as little as you like, wherever you want, to customize the interior to suit your needs. Foam sheets attach to the interior with Velcro®.

NOTE: May be purchased at any time. Colors available are Burgundy, Orange, Red, Gray, Kelly Green, Blue and Purple.

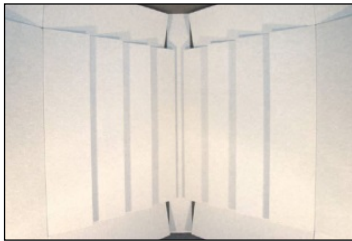
VSS – Ventilation Silencing System



Standard WhisperRoom ventilation systems are quiet. However, the air-flow noise is still slightly audible inside the WhisperRoom. This noise can be eliminated by the installation of a VSS. The number of VSS units needed depends on the size of the WhisperRoom and the prices listed are for the specific model noted. One VSS is required for each standard ventilation system. Each VSS consists of two additional baffled exhaust ducts, with hoses and adapters, linked in-line between the standard exhaust duct and the remote fan unit (RFU).

NOTE: *May be ordered and installed at any time. Roof-mount ventilation systems and VSS systems available for most models.*

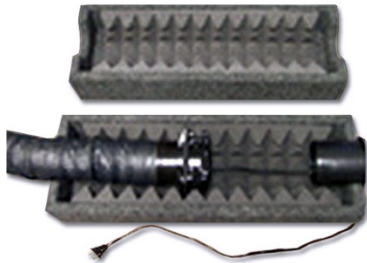
SDS – Soundwave Deflection System



The Soundwave Deflection System is available for the interior of all SE 2000 Series WhisperRooms (except LP 127). Primarily designed to control soundwave reflections and prevent resonant frequencies, the SDS also presents a very attractive and professional appearance. By attaching a series of deflector panels to two perpendicular interior wall surfaces, parallel walls are converted to non-parallel. SDS panels attach with Velcro® and can be re-configured as many times as necessary.

NOTE: *May be ordered and installed at any time. Not required for the LP model.*

EFS – Exterior Fan Silencer



WhisperRoom remote fan units have a 38dB noise rating. This slight noise can be eliminated by positioning each fan into an Exterior Fan Silencer (EFS). The number of EFS units needed depends on the size of the WhisperRoom and the number of ventilation systems required.

NOTE: *May be ordered and installed at any time.*

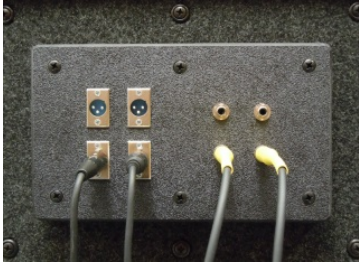
HX – 10” Height Extension



WhisperRooms are designed to permit installation in residences and facilities with standard ceiling heights (approximately 8'). However, when additional height is required for equipment or application-specific needs, a 10" height extension upgrade is available.

NOTE: *Prior to placing your order you should ensure that the host room ceiling height will permit the installation of the Height Extension. Must be specified at initial order.*

XLR 2636 or 3236– XLR Panel



Standard
XLR 2636-8 S
 \$ 800

Enhanced
XLR 2636-8 E
 \$1,220

Standard
XLR 3236-8 S*
 \$ 895

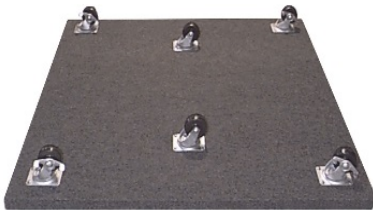
Enhanced
XLR 3236-8 E*
 \$1,410

The XLR Panel is installed in a 40” or larger wall component with a prewired, XLR panel insert consisting of 4 XLR jacks and 4 - ¼” stereo phono jacks. The XLR feature comes with a 26” x 36” or 32” x 36” (depending on model) window above and a 2” cable passage below the panel. This feature is great for recording, mixing and mastering applications.

**32” x 36” windows are only available on Models 4848, 4872, 7272, and 7296.*

NOTE: *Must be specified at initial order. This feature is available for all models except MDL 4230.*

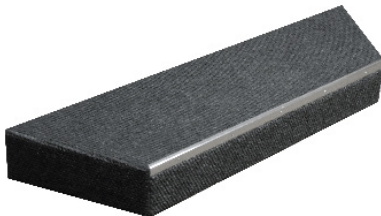
CP - Caster Plate



The Caster Plate is an additional floor component with wheels to aid in the mobility of a WhisperRoom. The Caster Plate also provides a substantial amount of downward noise control. It adds additional mass in the downward direction and provides a 4” air buffer below the WhisperRoom. This feature is highly recommended for applications where low-end, structurally transmitted noise is a problem. Also, see optional Step!

NOTE: *This option adds five (5) inches to the overall height of a unit and may be purchased at any time. However, for ease of assembly, it is recommended to purchase during initial order.*

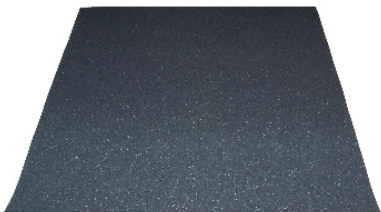
Step



An optional exterior step is now available for situations which require an optional Caster Plate. The step provides a comfortable transition when stepping up into and down out of the WhisperRoom. It is highly recommended that the step be used in conjunction with the optional Caster Plate.

NOTE: *Steps are \$75.00 each.*

IEP Floor – Isolation Enhancement Package Floor



The IEP floor is a 5/16” duracoustic mat made of recycled rubber that is included in the Enhanced models or IEP upgrades. It is installed on the floor underneath the WhisperRoom floor and provides additional isolation. The IEP floor can be purchased for Standard rooms also and is recommended if there is a possibility of upgrading to an Enhanced model at any point in time.

WDO – Wall Windows



WDO 2630 S
\$ 330

WDO 2636 S
\$ 365

WDO 2642 S
\$ 415

WDO 2648 S
\$ 485

WDO 2630 E
\$ 660

WDO 2636 E
\$ 730

WDO 2642 E
\$ 830

WDO 2648 E
\$ 970



WDO 3230 S*
\$ 410

WDO 3236 S*
\$ 460

WDO 3242 S*
\$ 530

WDO 3248 S*
\$ 640

WDO *3230 E
\$ 820

WDO 3236 E*
\$ 920

WDO 3242 E*
\$ 1,060

WDO 3248 E*
\$ 1,280

30" Windows

Provides plenty of visibility for applications which require that the user stand inside the WhisperRoom.

36" Windows

For applications which require visibility while the user sits, a 36" window is recommended.

42" Windows

If an interior desk or table is to be used beneath the window, a 42" window will allow the necessary visibility.

48" Windows

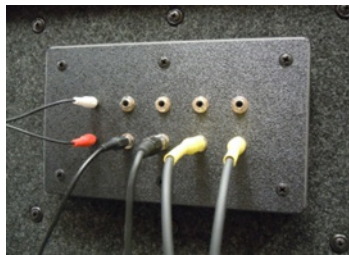
The 48" window provides the most visibility.

Other than size, the design is the same as that of a door window. Each glass unit consists of multiple layers of 1/4" laminated safety glass separated by an air buffer(s). Safety glass is used because of its superior noise reduction capabilities, and its safety features; if broken, it will not shatter. A window does not reduce the noise reduction capability of a WhisperRoom; however, it does increase the amount of interior reflective surface area. An additional cable passage plug is located at the base of each window component.

**32" x 36" windows are only available on Models 4848, 4872, 7272, and 7296.*

NOTE: Must be specified at initial order. Available on 40" or larger wall components.

AJP 2636 or 3236 – Audio Jack Panels



Standard

AJP 2636-6 S
\$ 695

AJP 2636-10 S
\$ 800

Enhanced

AJP 2636-6 E
\$1,115

AJP 2636-10 E
\$1,220

Standard

AJP 3236-6 S*
\$ 790

AJP 3236-10 S*
\$ 895

Enhanced

AJP 3236-6 E*
\$1,305

AJP 3236-10 E*
\$1,410

The Audio Jack Panel is installed in a 40" or 46" wall component, and is a prewired, jack-panel insert consisting 4 or 8, 1/4" stereo phono jacks and 2 RCA connectors. The AJP feature comes with a 26" x 36" or 32" x 36" (depending on model) window above and a 2" cable passage below the Jack Panel. Panel is available with 6 or 10 jacks. This feature is great for audiometric applications.

**32" x 36" windows are only available on Models 4848, 4872, 7272, and 7296.*

NOTE: Must be specified at initial order. This feature is available for all models except MDL 4230.